

# Cool Breezes

71" x 91"



Designed, Pieced and Quilted by  
**Phyllis Fay**

## MATERIALS:

3-1/2 yards NC Toss Ivory  
5/8 yard NC Toss Blue  
2-3/8 yards Blueberry  
1 yard Blender Yellow  
2-3/4 yards Leaves Small, includes Binding  
6 yards, Backing

## RECOMMENDED TOOLS:

Wing Clipper®  
Quilter's Magic Wand®  
Tucker Trimmer® I

*READ THROUGH ALL INSTRUCTIONS BEFORE STARTING THIS PROJECT. FABRICS ARE SEWN RIGHT-SIDES TOGETHER USING A 1/4" SEAM ALLOWANCE THROUGHOUT.*

*WOF = WIDTH OF FABRIC; RST = RIGHT SIDES TOGETHER; HST = HALF SQUARE TRIANGLES*

## CUTTING INSTRUCTIONS:

### From NC Toss Ivory Fabric:

Cut [14] — 3" × WOF strips  
Subcut [180] — 3" squares  
Cut [6] — 2-3/4" × WOF strips  
Subcut [72] — 2-3/4" squares  
Cut [6] — 4-3/4" × WOF strips  
Subcut [72] — 4-3/4" × 2-3/4" rectangles  
Cut [3] — 12-1/2" × WOF strips  
Subcut [48] — 2-1/2" × 12-1/2" rectangles

### From Blueberry Fabric:

Cut [3] — 5-1/2" × WOF strips  
Subcut [18] — 5-1/2" squares  
Cut [2] — 18-1/2" × WOF strips  
Subcut [3] — 18-1/2" squares, cut twice diagonally, yielding 12 triangles, only using [10]  
Subcut [2] — 10" squares, cut once diagonally, yielding 4 triangles  
Cut [8] — 2-1/2" × WOF strips, Inner Border

### From NC Toss Blue Fabric:

Cut [3] — 5-1/2" × WOF strips  
Subcut [18] — 5-1/2" squares

### From Blender Yellow Fabric:

Cut [6] — 4-3/4" × WOF strips  
Subcut [72] — 4-3/4" × 2-3/4" rectangles

### From Small Leaves Fabric:

Cut [6] — 2-3/4" × WOF strips  
Subcut [72] — 2-3/4" squares  
Cut [3] — 3" × WOF strips  
Subcut [36] — 3" squares  
Cut [2] — 2-1/2" × WOF strips  
Subcut [31] — 2-1/2" squares  
Cut [9] — 4-1/2" × WOF strips, Outer Border  
Cut [9] — 2-1/4" × WOF strips, Binding

## BLOCK ASSEMBLY:

### Flying Geese:

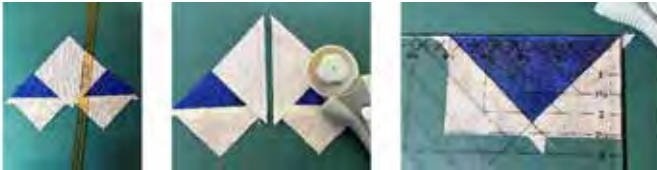
1. Position a NC Toss Ivory 2-3/4" square in opposite corners of a NC Toss Blue 5-1/2" square, but nudge the Ivory square inward from the raw edge by a thread or two. The Ivory squares will overlap in the center of the Blue square.
2. Using the Quilter's Magic Wand, place the etched laser line on opposite corners and mark a stitching line on each side of the Quilter's Magic Wand.
3. Stitch on each of the stitching lines. Cut the large square apart between the stitching lines and press toward the small triangles.



4. Position a NC Toss Ivory 2-3/4" square in the corner of the pieced unit, nudging the small square inward by a thread or two.
5. Mark the stitching lines by placing the Quilter's Magic Wand on opposite corners. Mark a line on each side of the wand.
6. Stitch on each of the stitching lines. Cut the large square apart between the stitching lines and press toward the small triangles.
7. Trim each Flying Goose to precision using the Studio 180 Design Wing Clipper. Place the unit on the mat so that it is point toward you. Position the Wing Clipper on the unit

with the common diagonal line on the right-hand seam line.

- Place the intersection of the common diagonal line and the appropriate size left-hand seam line in the nose or point of the goose. Verify that the left-hand seam line is on the unit seam line.
- Trim [2] sides of the Flying Goose. Remove the Wing Clipper tool.



- Rotate the unit 180° and reposition the Wing Clipper on the unit.
- Place the corresponding X at the nose of the goose and align the previous cut lines with the guidelines of flying goose.
- Trim the remaining [2] sides of the Flying Goose. Make [72] NC Toss Blue flying geese.



- Repeat Steps 1-12 NC Toss Ivory 2-3/4" squares and in opposite corners of a Blueberry 5-1/2" squares. Measures 2-1/2" x 4-1/2". Make [72] flying geese.

### Pickets:

- On the back side of Leaves Small 2-3/4" squares, draw a diagonal stitching line.
- Position the small square on the short end of a NC Toss Ivory 4-3/4" x 2-3/4" rectangle placing RST and aligning the raw edges. The drawn diagonal line starts in the upper right-hand corner and goes to the bottom left-hand corner as shown. The angle of this seam will make a difference.
- Stitch on the line. You can chain stitch these to move the process along.
- Trim the excess corner away 1/4" from the stitching line. Press the seam allowance toward the small triangle. Be careful not to pull the unit distorting the bias edge seam.



- Trim the unit to precision using the Wing Clipper. Position the unit horizontally on the mat, wrong side up and the picket in the lower right-hand corner.
- Position the Wing Clipper on the unit with the common diagonal line directly on the seam line. Verify that the 2-1/2" x 4-1/2" trim down lines are just inside of the unit or that there is just a small amount of extra fabric on all [4] sides of the unit. Trim [2] sides of the unit.



- Remove the Wing Clipper, rotate the unit 180° and reposition the Wing Clipper on the unit. Align the previous cut lines of the unit on the 2-1/2" x 4-1/2" guidelines. There should be some extra fabric along the right-side and across the top. Trim the [2] remaining sides. Make [72] Small Leaves units.
- Repeat Steps 1-7 using NC Toss Ivory 2-3/4" squares and Blender Yellow 4-3/4" x 2-3/4" rectangles. Measures 2-1/2" x 4-1/2". Make [72].

**NOTE:** For Step 1, the drawn diagonal line starts in the upper left-hand corner and goes to the bottom right-hand corner as seen in the photo. The angle of this seam will make a difference.

### Leaves Small Half Square Triangles:

- On the wrong side each of the NC Toss Ivory 3" squares, place the etched laser line of the Quilter's Magic Wand on opposite corners of the square. Draw a stitching line on each side of the Quilter's Magic Wand.

- Place an Ivory square and a Leaves Small square RST. Stitch on each of the stitching lines. Trim them apart between the stitch lines and press toward the Leaves Small print.



- Trim each unit to precision using the Tucker Trimmer. Place the half circle in the upper right-hand corner of the unit. Position the sizing guideline labeled 2-1/2" on the seam line of the unit. Verify that the 2-1/2" x 2-1/2" trim down lines are just inside of the unit or that there is just a small amount of extra fabric on all four sides of the unit. Trim [2] sides of the unit.
- Remove the Tucker Trimmer, rotate the unit 180° and reposition the Tucker Trimmer on the unit. Align the previous cut lines of the unit on the 2-1/2" square guidelines. There should be some extra fabric along the right-side and across the top. Trim the [2] remaining sides. Measures 2-1/2" square. Make [72] HSTs.



### Main Block:

To avoid the need to use a partial seam, assemble the block accordingly.

- Pair and stitch together a NC Toss Blue and a Blueberry Flying Goose unit. Press toward the Blueberry or darker unit.



- Stitch together a Yellow Picket and a HST. Press the toward the picket.



- Assemble a Quad unit of the block using units from Step 1 and 2 along with [1] Small Leaves Picket unit. Sew together as shown.



- Using [2] Quad units from Step 3, sew together to create a Half unit as shown.



- Using [2] Half units from Step 4, sew together to create the entire block. Spin the seam. (reference You Tube video search: Deb Tucker's Spinning Seams) Make [18] blocks.



### QUILT TOP ASSEMBLY:

- Create the lattice or NC Ivory Toss 2-1/2" x 12-1/2" sashing with Small Leaves 2-1/2" cornerstones. Press toward the cornerstones.
  - Make [2] lattices of [1] Ivory rectangle and [2] Cornerstones
  - Make [2] lattices of [3] Ivory rectangles and [4] Cornerstones
  - Make [3] lattices of [5] Ivory rectangles and [6] Cornerstones
- Following the quilt top diagram on the next page, lay out the blocks, the vertical sashing rectangles, the horizontal lattice, and the side setting triangles in a diagonal or on point position.
- Stitch a 2-1/2" x 12-1/2" rectangle to the side of the blocks to create a full row. Press toward the rectangle.

4. Stitch together each row including the side setting triangles where appropriate.
5. Stitch a corner triangle on each corner of the quilt.
6. Trim and square up the center of the quilt top. Be sure to measure 1/4" from the intersections of the corner stones and the side setting triangles.

## **BORDER ASSEMBLY:**

### **Inner Border**

1. Sew the Blueberry 2-1/2" × WOF inner border strips together end to end.
2. Measure the length of quilt top center. Cut [2] Blueberry strips to that measurement. Sew strips to left and right sides of the quilt top.
3. Measure the width of quilt top center. Cut [2] Blueberry strips to that measurement. Sew strips to the top and bottom of the quilt top.

### **Outer Border**

1. Sew the Small Leaves 4-1/2" × WOF outer border strips together end to end.
1. Measure the length of quilt top center. Cut [2] Small Leaves strips to that measurement. Sew strips to left and right sides of the quilt top.
2. Measure the width of quilt top center. Cut [2] Small Leaves strips to that measurement. Sew strips to the top and bottom of the quilt top.



## **FINISHING:**

1. Layer quilt top with batting and backing.
2. Quilt as desired.
3. Binding: Sew the Small Leaves 2-1/4" × WOF strips together end to end. Press seam open. Press in half with wrong sides together. Bind the quilt with your preferred method.
4. Label & Enjoy!

## *Phyllis Fay*



Phyllis is a co-author of Tucker University along with her business partner, Beth Sidley. Together they combined their teaching experience and shop owner experience and create a turn-key curriculum for instructors to use to teach the Studio 180 Design tools and techniques. The Tucker University BOM programs are extremely popular and have been created for quilters to build their piecing and design skills. Join Phyllis and Beth for classes at [www.tuckeruniversity.net](http://www.tuckeruniversity.net).